

Rudbeckia Goldsturm Solutions

(*Rudbeckia fulgida sullivantii* Goldsturm)

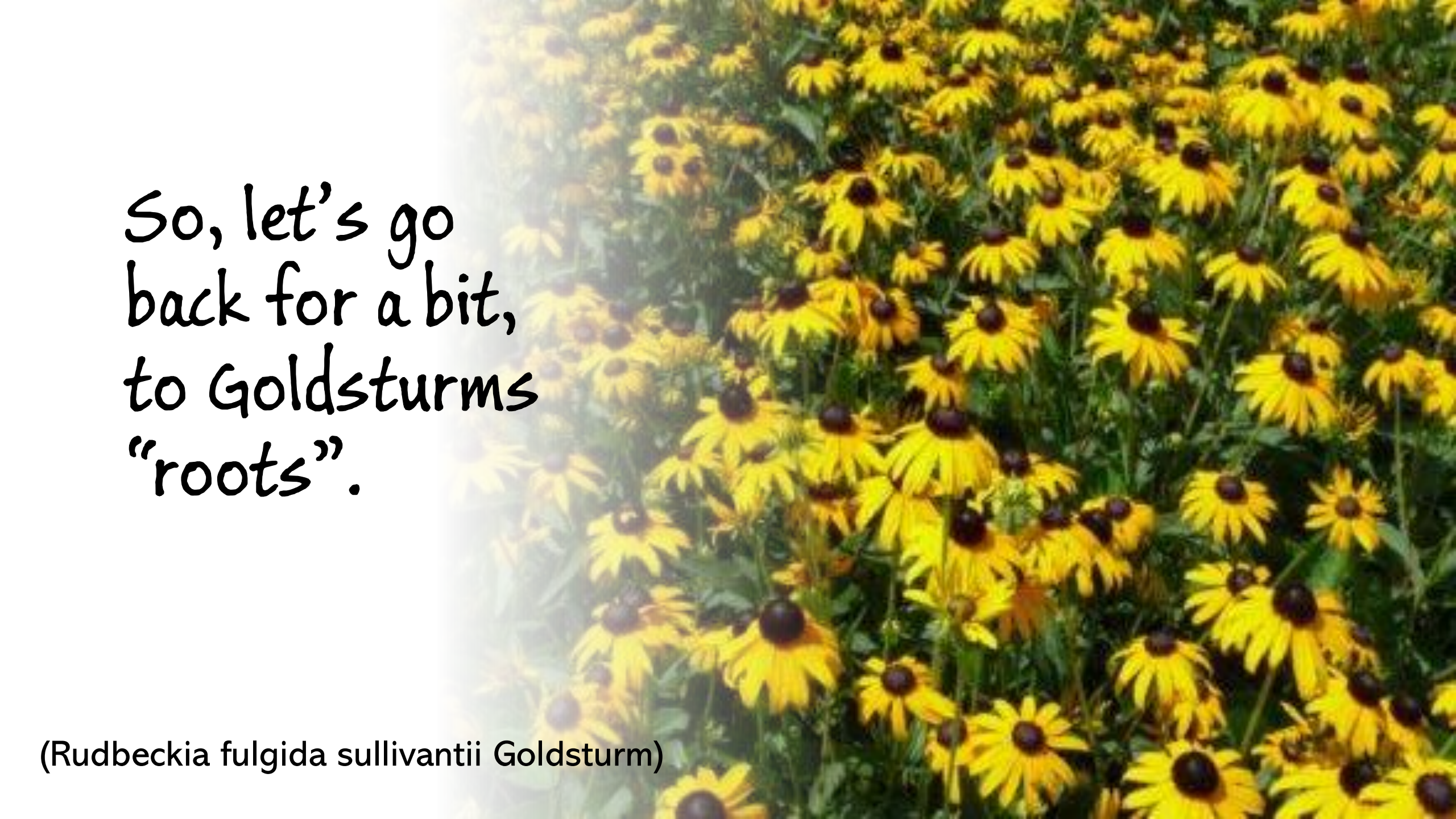


Rudbeckia fulgida sullivantii Goldsturm has been a landscape mainstay for eons, it seems.

And while it has lots of good things going for it, such as long bloom time, tolerance to clay soils and is a pollinator attractor, it does have some drawbacks, such as stress born diseases like Angular leaf spot, Septoria leaf spot and powdery mildew.

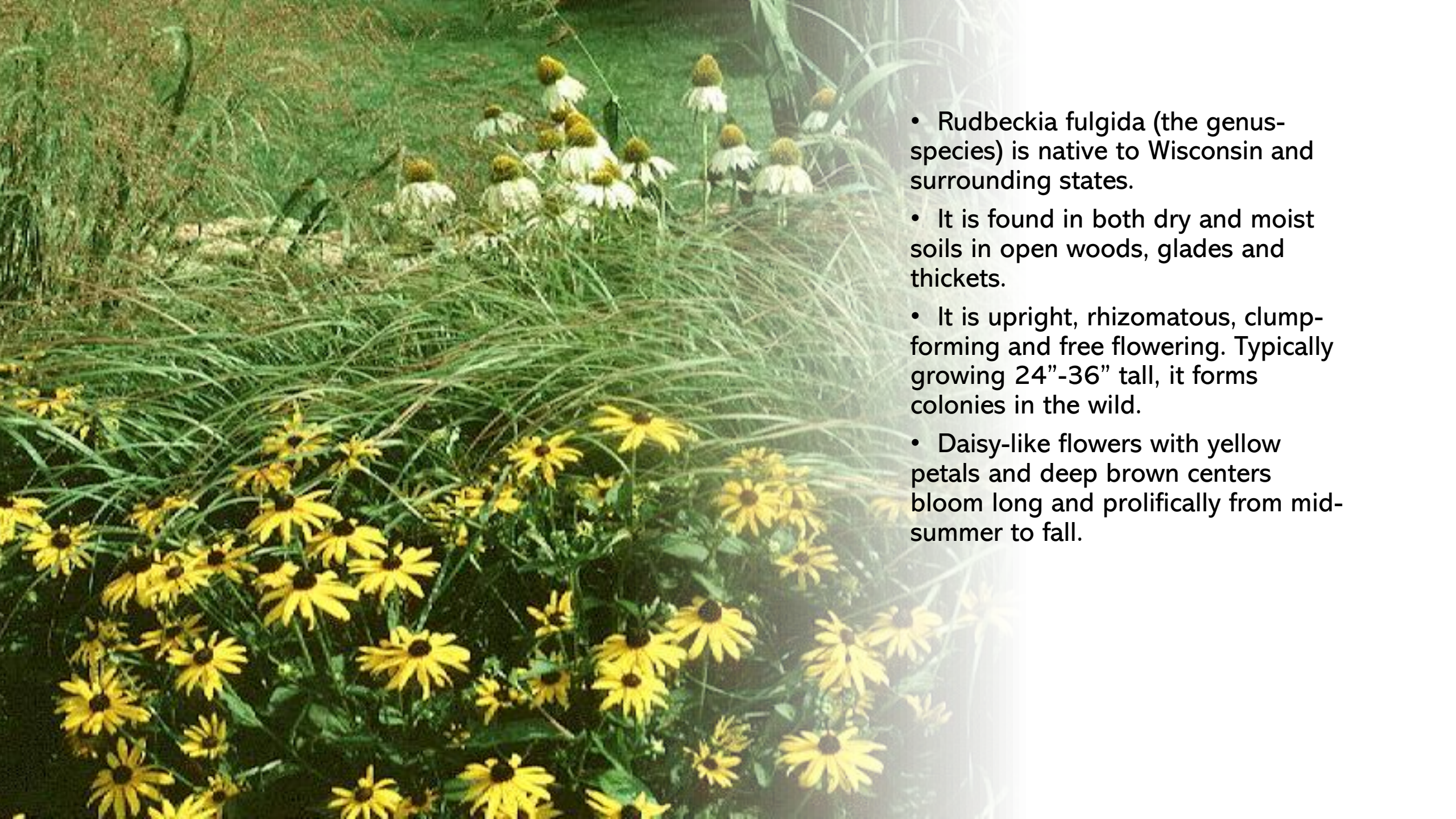
In recent years there have been some great new selections, with better breeding that overcome the drawbacks of Goldsturm.





So, let's go
back for a bit,
to Goldsturms
"roots".

(*Rudbeckia fulgida sullivantii* Goldsturm)



- *Rudbeckia fulgida* (the genus-species) is native to Wisconsin and surrounding states.
- It is found in both dry and moist soils in open woods, glades and thickets.
- It is upright, rhizomatous, clump-forming and free flowering. Typically growing 24"-36" tall, it forms colonies in the wild.
- Daisy-like flowers with yellow petals and deep brown centers bloom long and prolifically from mid-summer to fall.

- However, *Rudbeckia fulgida* var. *sullivantii*, or Sullivant's Coneflower, is native to swamps, shorelines, fens and sedge meadows from New York all the way to Michigan and south to Arkansas.

- Goldsturm is a selection of var. *Sullivantii* as is *R. f. sullivantii* Little Goldstar.





HMMM....

If Goldsturm is selected from a variety that is native to swamps and other wet areas but is typically planted in full sun, well-drained locations, one could see how it would get very stressed without abundant supplemental and consistent watering.

Angular leaf spot, Septoria leaf spot and powdery mildew are typical diseases found on Rudbeckia Goldsturm.

These diseases are caused by the stress of hot, dry locations without adequate and consistent water.



What are the alternatives?

Plant breeders have been working on incorporating other, more disease resistant and drought tolerant species into their breeding programs.



Rudbeckia fulgida var speciosa

- One such species that is more disease resistant.
- It can be used alone but is also a parent of the following...



Rudbeckia fulgida speciosa Viette's Little Suzy

- A dwarf selection of *R. f. speciosa* that has good disease resistance and does not typically get black spot.
- Although the blooms of Viette's Little Suzy are not particularly large, they are produced in great abundance over several months.
- The basal foliage turns mahogany in fall.



Rudbeckia fulgida speciosa Summer Blaze

- A compact selection of *R. f. speciosa* that tolerates hot and humid summers very well.
- It blooms from July to October.



Rudbeckia fulgida var deamii

- A variety that stands out on its own.
- It blooms and blooms like Goldsturm but is quite drought tolerant once established.
- Has been incorporated in recent breeding programs.
- We like it a lot!



Rudbeckia x American Gold Rush

- The best selection to date for disease resistance.
- Slightly more compact in height than Goldsturm.
- Thinner and hairier foliage.
- Extensive trials have shown no sign of Septoria leaf spot disease, even in wet, humid conditions.
- One of its parents is Rudbeckia fulgida var deamii.



Rudbeckia x Glitters like Gold

- Another variety we highly recommend!
- One of its parents is Rudbeckia fulgida var deamii.
- Highly disease resistant.
- Height and bloom time is similar to Goldsturm.

*We hope some of these alternatives
have piqued your interest.*

Try them sometime soon!



Thank you!

Questions? Comments?

Please contact us!

W. & E. Radtke, Inc.

262-253-1412

info@weradtke.com

